

nutricote

Controlled release fertiliser

Presentation

NUTRICOTE is a very accurate fertiliser with a well-controlled release in a wide range including some new formulations (blend, high potash, micro).

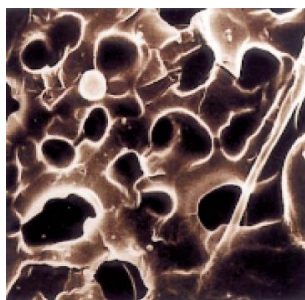
FIELDS OF APPLICATION

NUTRICOTE can be incorporated into composts or in the soil when starting cultivation. It supplies the plant with all of its nutrition throughout the growing period. It can be also used as top dressing. Depending on the types, the fertilizing action is effective from 2 months to 3 years.

PRINCIPLE

The release time depends on the density of micro perforations in the fine resin coating. In other fertilisers, it is the thickness of the coating that determines the release rate. The special coating of NUTRICOTE gives the following advantages:

- Elastic membrane, resistant to splitting
- Release curve is linear in time



Membrane porosity seen with microscope

Performances and uses

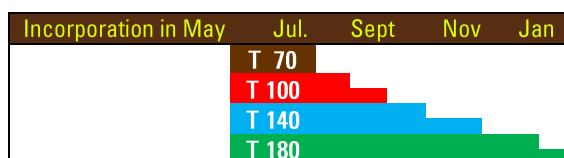
GRANULE SIZE

The granules have a diameter between 3 and 4 mm (except NUTRICOTE MICRO, see after). This makes it suitable for use in small containers, giving an even distribution of the granules in the pots.

CHOICE OF THE TYPE

The « T » followed by a figure expresses the « type ». The « type » fits a standard released pattern. For a specific « type », temperature only will have an effect on the longevity of the fertiliser release.

Duration of action of the main types of NUTRICOTE depending on the date of incorporation (outside) (the more the line is short, the more the region is warm)



To choose the right « type », the cropping period and average temperature for the area need to be known. Roughly speaking, we can consider the following durations:

Type	T 70	T 100	T 140	T 180	T 270	T 360	T 540
months	4±1	6±1	9±2	12±2	18±3	24±6	36±6

Best is to proceed to a preliminary test or to get in touch with your distributor who will advise you.

Rates of use

Dose in kg/m³ for mixing into the compost (unfertilised) depending on the type chosen (T).

Type	Sensitive crop	Normal crop	Plant with high demand
T70	1,5	2	3
T100	2	3	4
T140	2,5	4	5
T180	3	5	6
T270	4,5	7	9
T 360	5,5	8	11
T 540	9	12	16

NUTRICOTE range

Formula	Reference	N-P-K	Type
Unit : 20 kg bag - 48 bags / pallet			
2-1-1	718.100	18- 6- 8 + 2 MgO + chelated micro nutrients (MN)	T 100
	718.140	18- 6- 8 + 2MgO + MN	T140
	718.180	18- 6- 8 + 2MgO + MN	T180
	718.270	18- 6- 8 + 2MgO + MN	T 270
	718.540	18- 6- 8 + 2MgO + MN	T 540
1-1-1	713.070	13-11-11 + 2MgO + MN	T 70
	713.100	13-11-11 + 2MgO + MN	T 100
	713.180	13-11-11 + 2MgO + MN	T 180
1-1-2	710.100	10-8-18 + 1,5MgO + MN	T 100
	710.140	10-8-18 + 1,5MgO + MN	T 140
Unit : 10 kg bag –100 bags / pallet			
MICRO	712.070	12-10-10 + 2MgO + MN	T 70

Micro formulation 12-10-10

Special formulation for small containers and plug trays. The special granules give a very good and even distribution.

High potash formulation 10-8-18

In most slow release fertilisers, the most soluble salts, including nitrogen, will be released faster than others.

In a 1-1-1 formulation, more nitrogen in proportion to potash is available at the start of growing with more potash available at the end of cropping, which suits most crops well.

The 10-8-18 formulation is dedicated to growers who need a constant nitrogen / potash ratio throughout the growing period. This is achieved by mixing together a high nitrogen and a high potash formulation with similar release curves.



Notice of use

1 – NUTRICOTE should be applied according to soil or growing media conditions and the specific requirements of the crop being grown. It is recommended that a soil analysis is done prior to incorporation of NUTRICOTE. FERTIL is not responsible for the damages caused by misuse of the product.

2 – The release of NUTRICOTE starts when the product is in contact with moisture. Do not incorporate NUTRICOTE in the growing media earlier than two weeks before use except if it is dry.



www.fertil.fr

fertil